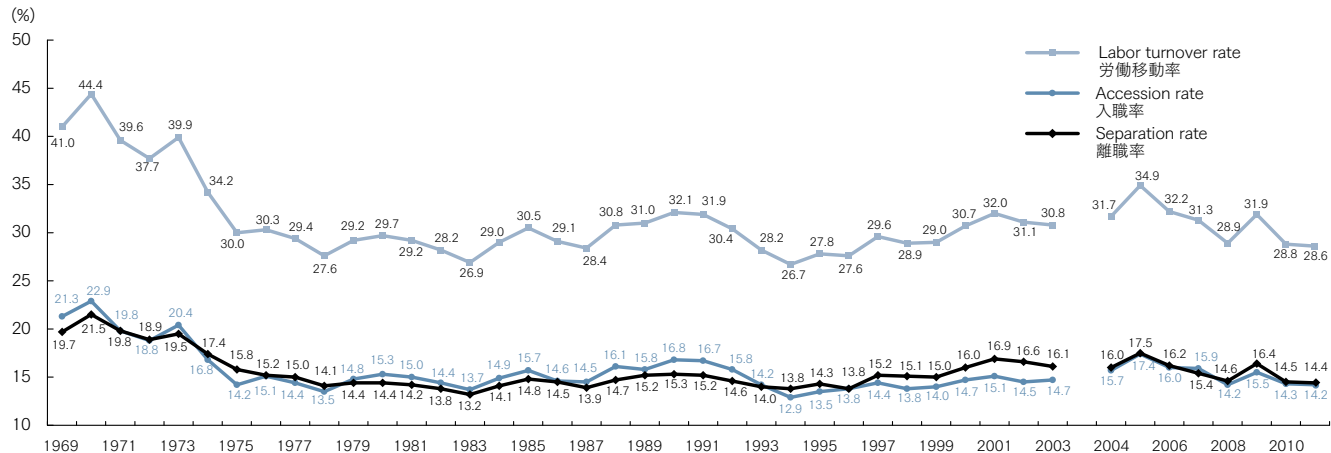


29. Trends in Labor Turnover

労働移動の推移



Source: Ministry of Health, Labour and Welfare, *Survey on Employment Trend*

Notes: 1) Accession rate = Number of hired employees / Number of regular employees (A) (as of July 1)

Separation rate = Number of separated employees / Number of regular employees (B) (as of July 1)

Labor turnover rate = (A) + (B)

2) From 1991, Construction is included.

3) As industries covered have partially increased since 2004, figures do not connect to those before 2003.