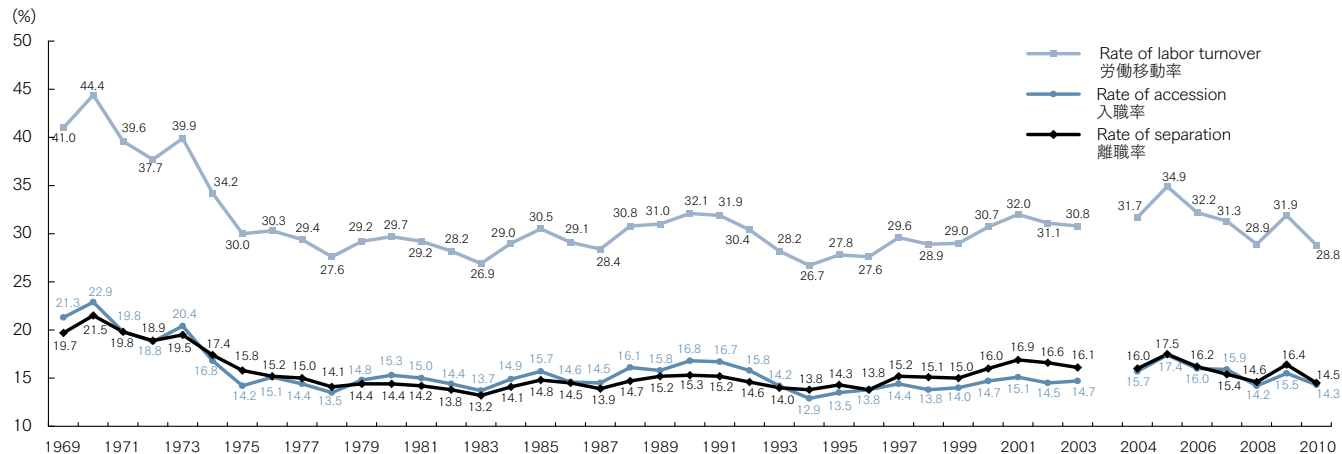


29. Trends in Labor Turnover

労働移動の推移



Source: Ministry of Health, Labour and Welfare, *Survey on Employment Trend*

- Notes:
- 1) Rate of accessions = Number of hired employees / Number of regular employees (A) (as of July 1)
 Rate of separation = Number of separated employees / Number of regular employees (B) (as of July 1)
 Rate of labour mobility = (A) + (B)
 - 2) From 1991, Construction is included.
 - 3) As industries covered have been partially increased since 2004, figures do not connect to those before 2003.