



# Recent Statistical Survey Reports

March 2008

[Tuesday, March 4 –Tuesday, April 1]

## Statistical Survey Reports

### Indexes of Business Conditions (Preliminary Report for January)

Thursday, March 6, released by the Cabinet Office

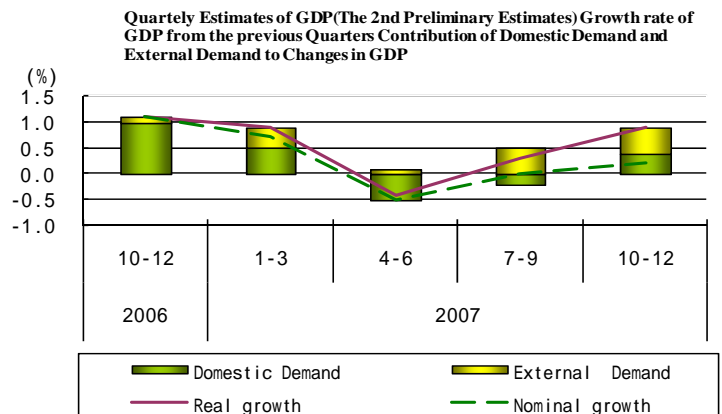
The Leading Index was 30.0%, the Coincident Index was 22.2%, and the Lagging Index was 62.5%. The Leading Index and the Coincident Index of the preliminary report mark below 50% for the first time in 2 months and the Lagging Index surpassed 50% for 3 consecutive months.

### National Accounts (The 2nd Preliminary Estimates of Expenditure in Oct.-Dec.)

Wednesday, March 12, released by the Cabinet Office

Real GDP (Gross Domestic Product) growth rate (Seasonally Adjusted) increased by 0.9% (3.5% on annual basis) from the previous quarters.

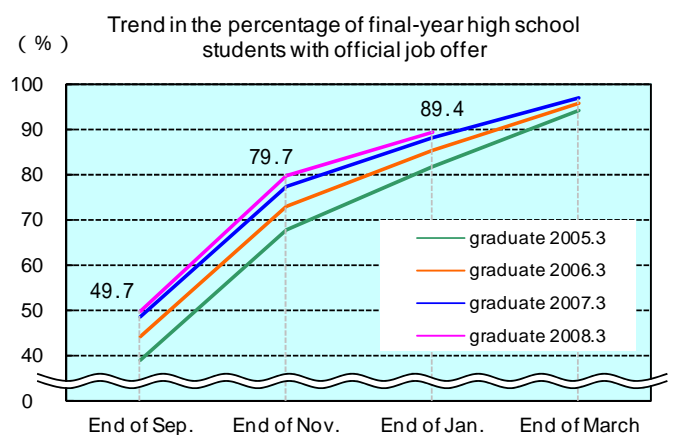
Of real GDP growth rate, 0.4% was contributed by domestic demand and 0.5% by external demand.



### Survey on Situation of Preliminary Job Offers for New Senior and Junior High School Graduates in Mar.2008 (End of January)

Friday, March 14, released by the Ministry of Health, Labour and Welfare

The number of final-year senior high school students who got an official job offer was 169 thousand people, increased by 0.3% compared to the same period the previous year. The ratio of final-year senior high school students receiving official job offer was 89.4%, increased by 1.3 points from a year earlier. The ratio of active job openings to applicants for the students was 1.79, increased by 0.09 points from a year earlier.



The number of final-year junior high school students who got an official job offer was 750 people, decreased by 7.3% compared to the same period the previous year. The ratio of final-year junior high school students receiving official job offer was 25.7%, decreased by 1.1 points from a year earlier.

### Survey on Situation of Preliminary Job Offers for New Graduate in Mar.2008 (University, etc.) (February 1)

Friday, March 14, released by the Ministry of Health, Labour and Welfare,

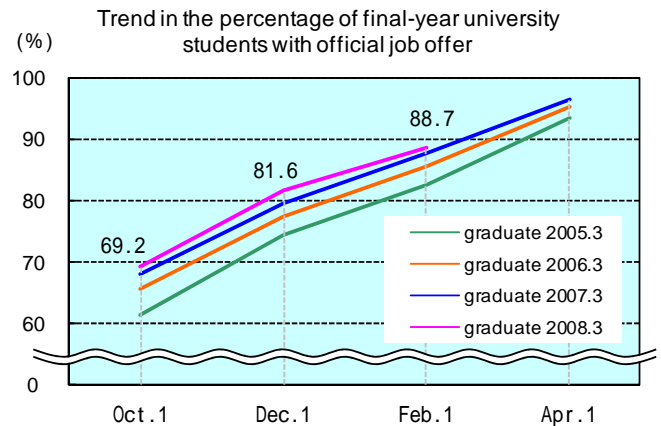
## the Ministry of Education, Culture, Sports, Science and Technology

The ratio of final-year university students who got an official job offer to applicants was 88.7%, increased by 1.0 points from a year earlier.

That of final-year junior college students (female only) was 76.7%, increased by 6.1 points from the same period a year earlier.

That of final-year technology college students (male only) was 99.6%, increased by 1.2 points from the same period a year earlier.

That of final-year vocational school students was 81.6%, decreased by 1.7 points from the same period a year earlier.



### Basic Survey on Wage Structure (2007)

**Tuesday, March 18, released by the Ministry of Health, Labour and Welfare**

The average scheduled cash earnings for general employees was 301,100yen, decreased by 0.2% from the previous year. That for men was 336,700yen (decreased by 0.3% from the previous year), and that for women was 225,200yen (increased by 1.2% from the previous year). Hourly wages of part-time employees for men was 1,085yen (increased by 2.6% from the previous year), that for women was 962yen (increased by 2.3% from the previous year).

### 5th-round Follow-up Survey on adults in the 21st Century (Continuous Survey on the livelihoods of the Japanese citizens)

**Wednesday, March 19, released by the Ministry of Health, Labour and Welfare**

As for women who are age 20-34 in 2002 and got married in these four years(2002-2005), the change of their employment situations between before and after the marriage, “continuing the same job” is 44.5%, “having left the job” is 28.7% and “having changed jobs” is 11.3% and so on.

### Business Outlook Survey (January-March)

**Tuesday, March 24, released by the Cabinet Office, the Ministry of Finance**

Difference of Employment BSI (“slightly insufficient”- “slightly excessive”) as of end of March 2008 shows the more than 10 points of an expansion of “slightly insufficient” in large-scale, medium-sized, and small-to-medium-sized corporations. The outlook for the end of September 2008 in all industries is also “slightly insufficient” in large-scale, medium-sized, and small-to-medium-sized corporations.

### Consumer Price Index (February)

**Friday, March 28, released by the Ministry of Internal Affairs and Communications**

The Consumer Price Index was 100.5, an increase of 1.0% from the previous year. Omitting Fresh food, the comprehensive index was 100.4, an increase of 1.0% from the previous year, both indexes increased for 5 months.

And in the ward –areas of Tokyo in March, the former accounted for 100.5, an increase of 0.6% from the previous year. Omitting Fresh food, the latter accounted for 100.3, an increase of 0.6% from the previous year.

### Family Income and Expenditure Survey (February)

**Friday, March 28, released by the Ministry of Internal Affairs and Communications**

The average monthly income for a worker’s household with 2 or more family members decreased by 0.1% from the same month the year before. It decreased for 4 months.

### Labour Force Survey (February)

**Friday, March 28, released by the Ministry of Internal Affairs and Communications**

### Report on Employment Service (February)

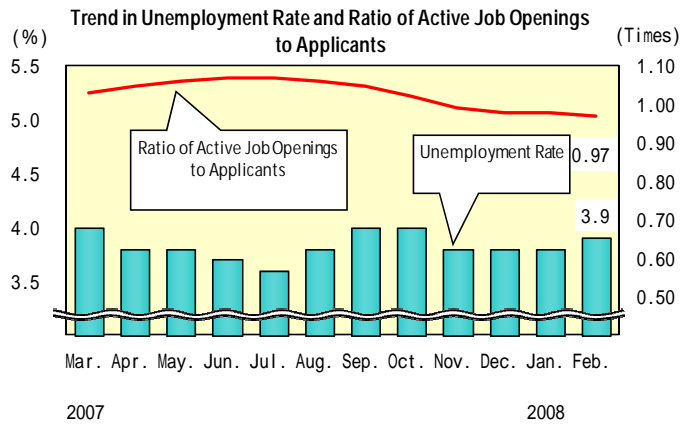
**Friday, March 28, released by the Ministry of Health, Labour and Welfare**

The unemployment rate (seasonally adjusted) was 3.9%, increased by 0.1 points from the previous month. That for men was 4.0%, increased by 0.1 points from the previous month, and that for women was 3.8%, increased by 0.1 points from the previous month.

The number of unemployed persons decreased by 80 thousand from a year earlier to 2.56 million.

The number of employees (seasonally adjusted) decreased by 130 thousand from the previous month to 55.11 million.

The ratio of active job openings to applicants (seasonally adjusted) was 0.97, decreased by 0.01 points from the previous month.



**Indices of Industrial Production (February)**

**Monday, March 31, released by the Ministry of Economy, Trade and Industry**

The index of industrial production (seasonally adjusted) decreased by 1.2 % from the previous month, it decreased for 2 months.

This index is expected to increase in March and decrease in April.

**Monthly Labour Survey (Preliminary Report in February / Year-end bonus)**

**Monday, March 31, released by the Ministry of Health, Labour and Welfare**

Total amount of cash earnings (for business establishments with 5 or more employees) increased 1.3% from a year earlier and scheduled cash earnings increased by 1.0%.

Non-scheduled hours worked in manufacturing (for business establishments with 5 or more employees, seasonally adjusted) increased by 2.1% from the previous month.

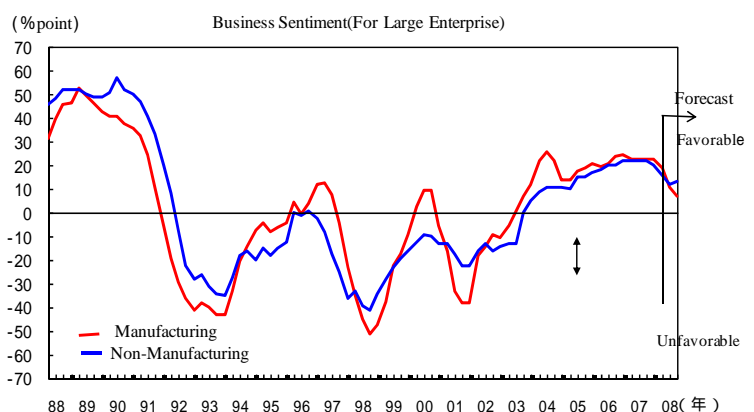
The amount of year-end bonus in 2007(for business establishments with 5 or more employees) was 417,507yen, decreased by 2.8% from the previous year.

**TANKAN (Short-Term Economic Survey of Enterprises) (March)**

**Tuesday, April 1, released by the Bank of Japan**

The Diffusion Index (DI) (“Favorable”-“Unfavorable”) for business conditions in large enterprises was 11 (19 in the previous quarter and forecast 7 in the coming quarter). The non-manufacturing DI was 12 (16 in the previous quarter and forecast 13 in the coming quarter).

The Diffusion Index (DI) (“Excessive”-“Insufficient”) for employment conditions in large enterprises of all industries was -12 (-13 in the previous quarter and forecast -13 in the coming quarter).



**Other Reports**

**Monthly Economic Report (March)**

**Wednesday, March 19, released by the Cabinet Office**

The economy recovery appears to be pausing recently.

- \* Exports are increasing moderately an industrial production is flat.
- \* Corporate profits have been in a weak tone and business investment is almost flat.

- \* The employment improvement appears to be pausing while some severe aspects remain.
- \* Private consumption is almost flat.
- \* Housing construction has almost picked up.

### **Monthly Economic Labour Report (March)**

**Thursday, March 27, released by the Ministry of Health, Labour and Welfare**

In looking at the aspects of labor and economy, the employment improvement appears to be pausing while some severe aspects remain.

### **Actual Situation of Working Women in 2007**

**Friday, March 28, released by the Ministry of Health, Labour and Welfare**

The women labor force in Japan increased for 4 consecutive years to 27.63 million and the labor force participation rate numbered 48.5%, unchanged from the previous year.

The labor participation rate for women with their age 30-34, which stood at the bottom of the shape of “M curve”, increased 1.2 points from the previous year to 64.0%, almost the same level as those with their age 35-39, 64.3%.

We have also compiled the "**Main Labor Economics Indicators**", which summarizes indexes relating to the labour economy. Please go to "<https://www.jil.go.jp/english/estatis/eindex.html>"

**EDITED BY Research and Statistical Information Analysis Department, The Japan Institute for Labour Policy and Training**