



Recent Statistical Survey Reports

May 2006

[Tuesday, May 2 –Wednesday, May 31]

Statistical Survey Reports

Indexes of Business Conditions (Preliminary Report for March)

Wednesday, May 10, released by the Cabinet Office

The Leading Index was 60.0%, the Coincident Index was 11.1%, and the Lagging Index was 75.0%.

Survey on Situation of Preliminary Job Offer for New Graduate in Mar.2005 (Senior and Junior High School) (End of March)

Friday, May 12, released by Ministry of Health, Labour and Welfare

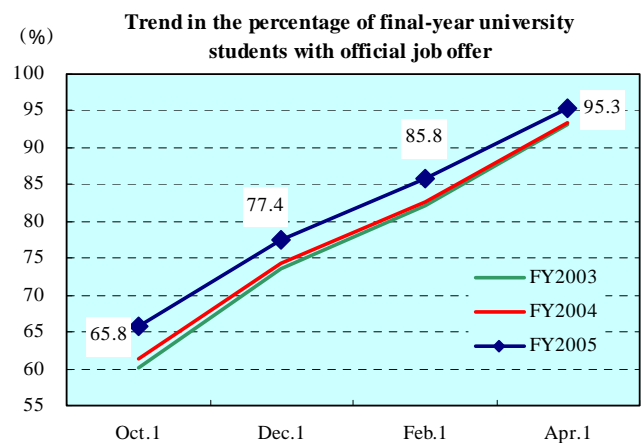
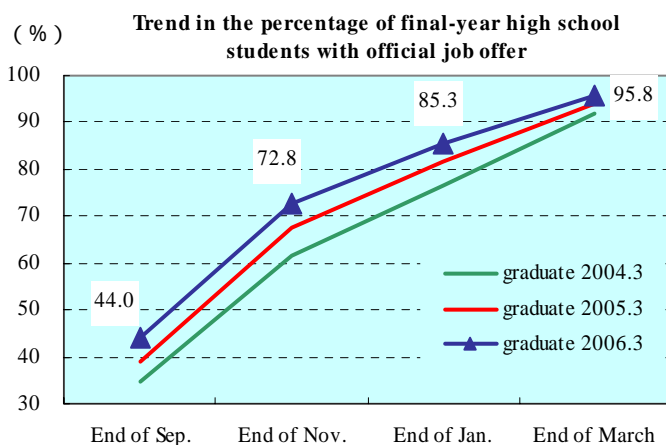
The ratio of final-year senior high school students with preliminary job offer was 95.8%, increased by 1.7 points from a year earlier.

Survey on Situation of Preliminary Job Offer for New Graduate in Mar.2005 (University, etc.) (April 1)

Friday, May 12, released by Ministry of Health, Labour and Welfare,

Ministry of Education, Culture, Sports, Science and Technology

The ratio of final-year university students with preliminary job offer was 95.3%, increased by 1.8 points from a year earlier. The ratio of final-year university students willing to be hired was 68.3%, increased by 2.0 points from a year earlier.



Report on Employment Service for the disabled (FY2005)

Tuesday, May 16, released by Ministry of Health, Labour and Welfare

The number of placements increased by 8.4 % from the previous fiscal year to 38,832.

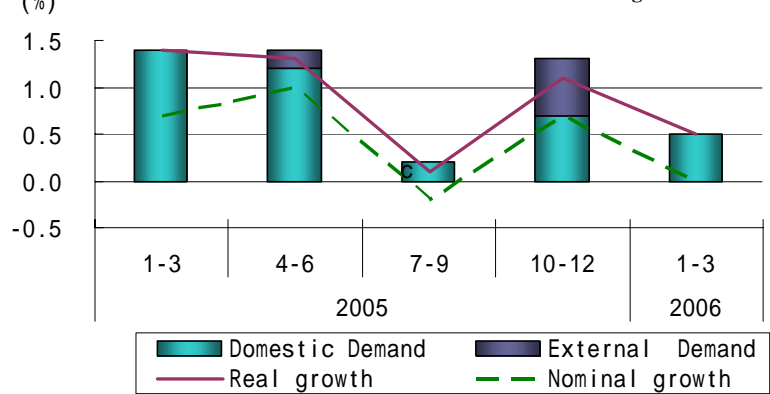
National Accounts (The 1st Preliminary Estimates of Expenditure in Jan.-Mar.)

Friday, May 19, released by the Cabinet Office

Quarterly Estimates of GDP (The 1st Preliminary Estimates)

Growth rate of GDP from the previous quarters

(%) Contribution of Domestic Demand and External Demand to changes in GDP



Real GDP (Gross Domestic Product) growth rate (Seasonally Adjusted) increased by 0.5% (1.9% on annual basis) from the previous quarters.

Of real GDP growth rate, 0.5% was contributed by domestic demand and 0.0% by external demand.

Achievement States of Individual Labor Dispute settlement System (FY2005)

Thursday, May 25, released by Ministry of Health, Labour and Welfare

Cases brought to comprehensive labour counseling desks across the country regarding civil, individual labour disputes totaled 176,429, an increase of 10.2% from the previous fiscal year.

Consumer Price Index (April)

Friday, May 26, released by the Ministry of Internal Affairs and Communications

The consumer price index was up 0.4% from the previous year. And in the Ku-areas of Tokyo in May, it was up 0.3% from the previous year.

Survey on Industrial Accidents (2005)

Friday, May 26, released by Ministry of Health, Labour and Welfare

The frequency rate of industrial accidents increased by 1.95 from a year earlier. The intensity rate was 0.12, unchanged from the previous year.

Indices of Industrial Production (Preliminary Report for April)

Tuesday, May 30, released by the Ministry of Economy, Trade and Industry

The index of industrial production (seasonally adjusted) increased by 1.5 % from the previous month, showing an increase for two consecutive months.

This index is expected to increase in May and June.

Family Income and Expenditure Survey (April)

Tuesday, May 30, released by the Ministry of Internal Affairs and Communications

The average monthly income for workers' household decreased by 4.9% in real values from the same month the year before, decreased for 6 months in a row.

Labor Force Survey (April)

Tuesday, May 30, released by the Ministry of Internal Affairs and Communications

Report on Employment Service (April)

Tuesday, May 30, released by the Ministry of Health, Labour and Welfare

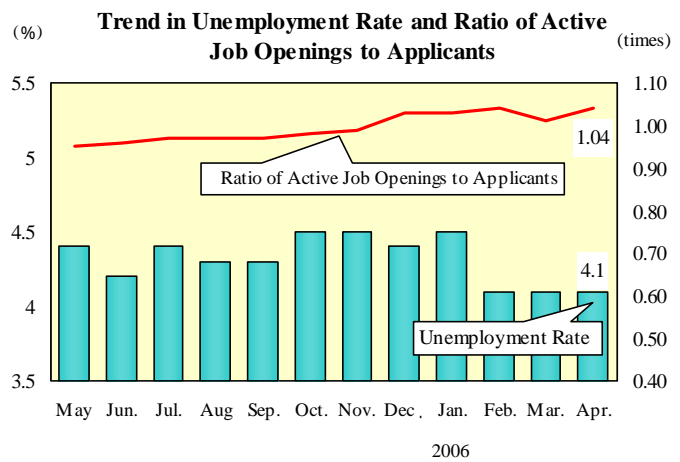
The unemployment rate (seasonally adjusted) was 4.1%, unchanged from the previous month.

That for men decreased by 0.1 points to 4.2%, that for women decreased by 0.1 points to 3.8%.

The number of unemployed persons decreased by 260 thousands from a year earlier to 2.84 million.

The number of employees (seasonally adjusted) decreased by 130 thousand people to 54.58 million people from the previous month.

The ratio of active job openings to applicants (seasonally adjusted) was 1.04, increased by 0.03 points from the previous month.



Labor Force Survey : Detailed Analysis (Provisional Report Jan.-Mar.)

Tuesday, May 30, released by the Ministry of Internal Affairs and Communications

The ratio of non-regular employees to employees except the board members was 33.2%, increased by 0.9 point from a year earlier.

By duration of unemployed period, 0.93 million remained out of work for less than 3 months and for more than a year respectively.

Monthly Labor Survey (Preliminary Report in April)

Wednesday, May 31, released by the Ministry of Health, Labour and Welfare

Total amount of cash earnings (for business establishments with 5 or more employees) increased by 0.3% from a year earlier, and scheduled cash earnings unchanged from a year earlier.

Non-scheduled hours worked in manufacturing (for business establishments with 5 or more employees, seasonally adjusted) increased by 0.3% from the previous month.

Other Reports

Monthly Economic Report (May)

Tuesday, May 16, released by the Cabinet Office

The economy is recovering.

- * Corporate profits are improving and business investment is increasing.
- * Private consumption is increasing moderately.
- * The employment situation is improving on a broader basis, though some severe aspects remain.
- * Exports are increasing and industrial production is increasing moderately.

Monthly Economic Labor Report (May)

Wednesday, May 17, released by the Ministry of Health, Labour and Welfare

In looking at the aspects of labor and economy, the employment situation shows an expansion of improvement though some severe aspects remain. For example, the unemployment rate is declining, though still remains at a high level, and wages are steadily increasing.

We have also compiled the "Main Labor Economics Indicators", which summarizes indexes relating to the labor economy. Please go to "<https://www.jil.go.jp/english/estatis/eindex.html>"

EDITED BY Statistical Information and Analysis Department, The Japan Institute for Labour Policy and Training