



# Recent Statistical Survey Reports

**January 2006**

[Thursday, December 29 –Wednesday, February 1]

## Statistical Survey Reports

### Awareness Survey on Livelihood

**Thursday, January 12, released by the Bank of Japan**

27.3% of the employees felt substantial anxiety for their employment or position at their companies, and 51.5% have anxiety to some degree.

### Survey on Situation of Official Job Offer for New Graduates in Mar. 2006 (Senior and Junior High School) (As of the End of November, 2005)

**Friday, January 13, released by the Ministry of Health, Labour and Welfare**

The ratio of active job openings to applicants for final-year senior high school students was 1.36, increased by 0.21 points from a year earlier. The number of final-year senior high school students with official job offer was 142 thousand people, increased by 8.1% from a year earlier. The ratio of students receiving official job offer was 72.8%, increased by 5.1 points.

The ratio of active job openings to applicants for final-year junior high school students was 0.55, increased by 0.10 points from a year earlier.

### Survey on Situation of Official Job Offer for New Graduates in Mar. 2006 (University, etc.) (As of December 1, 2005)

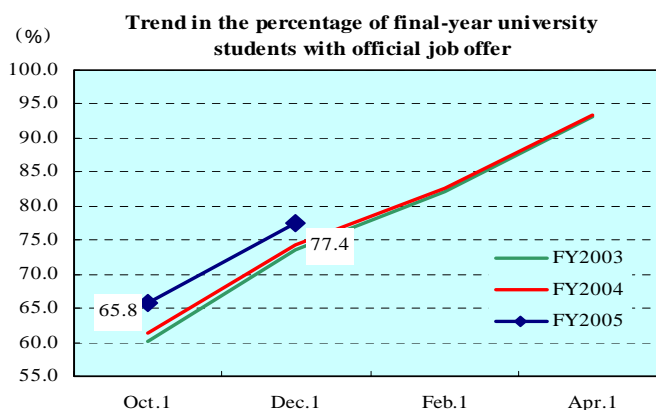
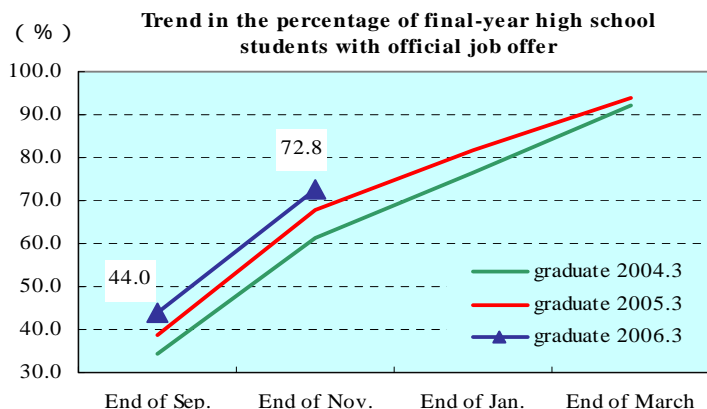
**Friday, January 13, released by the Ministry of Health, Labour and Welfare**

The ratio of final-year university students with official job offer to applicants for entering employment was 77.4%, increased by 3.1 points from a year earlier.

That of final-year junior college students (female only) was 50.0%, increased by 0.8 points.

That of final-year technology college students (male only) was 93.5%, decreased by 6.5 points.

That of final-year vocational school students was 59.7%, increased by 6.2 points from a previous year.



### **Survey on Wage Increase (2005)**

**Tuesday, January 17, released by the Ministry of Health, Labour and Welfare**

The ratio of enterprises that planned to increase average wages per employees was 73.5% (up by 3.7 points from a year earlier), while 2.8% of enterprises, down 0.6 points compared to the previous year, lowered them.

The average amount of revised wage was 3,904 yen based on weighted average of regular workers, and the average revised ratio was 1.4%. The amount increased for the first time in 8 years from a year earlier while rate increased for the first time in 14 years.

### **Report on Job Introduction Business (FY2004)**

**Tuesday, February 17, released by the Ministry of Health, Labour and Welfare**

The number of new job applicants was 1.63 million, decreased by 2.8% from the previous fiscal year. The number of job openings increased by 41.0% to 1.83 million. The number of employment decreased by 0.2% to 300 thousand.

### **Report on Manpower Dispatching Business (FY2004)**

**Tuesday, February 17 released by the Ministry of Health, Labour and Welfare**

The number of dispatched workers in FY2004 decreased by 4.1% to 2.27 million.

The average pay for a regular dispatched worker (in terms of 8-hour work) decreased by 0.3% to 15,958 yen, while that for a specified dispatched worker increased by 6.4% to 25,628 yen.

### **Statistical survey on Labor Dispute (FY2004)**

**Monday, January 23, released by the Ministry of Health, Labour and Welfare**

The total number of labor disputes was 737 cases, decreased by 135 cases( - 15.5%), that of participants in dispute was 710 thousand, decreased by 442 thousand( - 38.4%) compared to the previous year.

### **Consumer Price Index (December and 2005)**

**Friday, January 27, released by the Ministry of Internal Affairs and Communications**

Consumer Price Index decreased by 0.1% from a year earlier, and in the Ward- areas of Tokyo in January increased by 0.2%. The average index in 2005 decreased by 0.3% from a year earlier.

### **Indices of Industrial Production (Preliminary Report for December)**

**Monday, January 30, released by the Ministry of Economy, Trade and Industry**

The index of industrial production (seasonally adjusted) increased by 1.4% from the previous month.

This marks the 5th consecutive month with a increase. The index is expected to increase in January and decrease in February.

### **Family Income and Expenditure Survey (December and 2005)**

**Tuesday, January 31, released by the Ministry of Internal Affairs and Communications**

Living expenditure in workers' household increased by 3.2% in real values from a year earlier.

The average living expenditure in 2005 decreased by 0.3% in real values from the previous year.

### **Labor Force Survey (December and 2005)**

**Tuesday, January 31, released by the Ministry of Internal Affairs and Communications**

## Report on Employment Service (December and 2005)

**Tuesday, January 31, released by Ministry of Health, Labour and Welfare**

Unemployment rate (seasonally adjusted) was 4.4%, decreased by 0.2 points from the previous month.

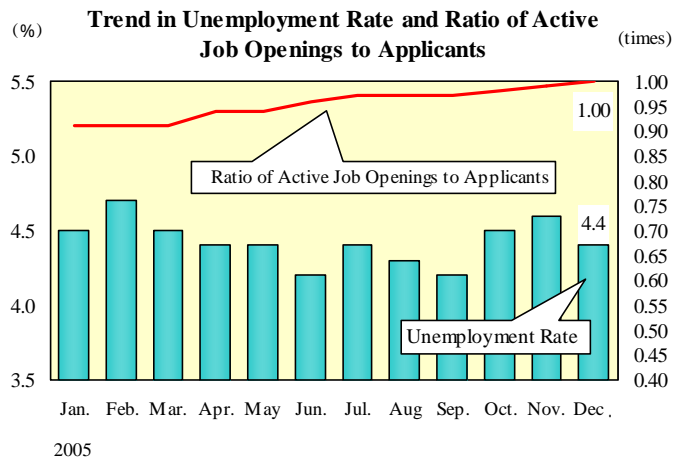
That for men decreased by 0.1 points to 4.5% while that for women dropped by 0.3 points to 4.3%.

The number of unemployed persons decreased by 50 thousands from a year earlier to 2.65 million.

The ratio of active job openings to applicants (seasonally adjusted) was 1.00, rose by 0.01 points from the previous month.

The average unemployment rate in 2005 was 4.4%, decreased by 0.3 points from a year earlier.

The average ratio of active job openings to the applicants in 2005 was 0.95, increased by 0.12 points from the previous year.



## Monthly Labor Survey (Preliminary Report in December and 2005)

**Wednesday, February 1, released by the Ministry of Health, Labour and Welfare**

Total cash earnings (for establishments with 5 or more employees) increased by 1.6% and contractual cash earnings increased by 0.8% from a year earlier.

Non-scheduled hours worked in manufacturing (for establishments with 5 or more employees, seasonally adjusted) decreased by 0.7% from the previous month.

The average total cash earnings in 2005 increased by 0.6%, marking for the first time in 5 years.

The average non-scheduled hours worked in manufacturing (for establishments with 5 or more employees, seasonally adjusted) in 2005 decreased by 0.4%, marking for the first time in 5 years.

Regular employees in 2004 increased for the second consecutive year by 0.5%.

## Other Reports

### Monthly Economic Report (January)

**Thursday, January 19, released by the Cabinet Office**

The economy is recovering at a moderate pace.

- \* Corporate profits are improving and business investment is increasing.
- \* Private consumption is increasing moderately.
- \* The employment situation is improving, though some severe aspects remain.
- \* Exports and industrial production are picking up.

### Monthly Economic Labour Report (January)

**Friday, January 20, released by the Ministry of Health, Labour and Welfare**

In looking at the aspects of labor and economy, the employment situation shows an expansion of improvement though some severe aspects remain. For example, the unemployment rate is declining, though still remains at a high level, and wages are steadily increasing.

## **Fiscal 2006 Economic Outlook and Basic Stance for Macroeconomic & Fiscal Management**

**Friday, January 20, released by the Cabinet Office**

The growth rate of real GDP in 2006 is expected to be around 1.9% (The nominal growth rate: approx 2.0%). The situation of Labor and employment is improving, though some severe aspects remain.

Total unemployment ratio slightly declined from the previous year (approx 4.1%).

We have also compiled the "**Main Labor Economics Indicators**", which summarizes indexes relating to the labor economy. Please go to "<https://www.jil.go.jp/english/estatis/eindex.html>"

**EDITED BY Statistical Information and Analysis Department, The Japan Institute for Labour Policy and Training**