



Recent Statistical Survey Reports

May 2005

[Tuesday, May 3 – Wednesday, June 1]

Statistical Survey Reports

Wage Survey on Forestry Workers by Occupation (2004)

Monday, May 9, released by Ministry of Health, Labour and Welfare

Daily contractual cash earnings (total occupation) was 11,910 yen, decreased by 3.4% from a year earlier.

Wage Survey on Outdoor Workers by Occupation (2004)

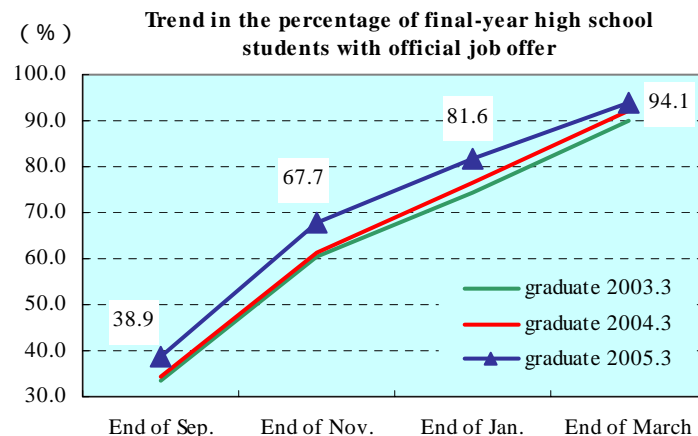
Monday, May 9, released by Ministry of Health, Labour and Welfare

Daily contractual cash earnings (construction industry, total occupation) were 13,100 yen, decreased by 1.9% from a year earlier.

Survey on Situation of Preliminary Job Offer for New Graduate in Mar.2004 (Senior and Junior High School) (End of March)

Friday, May 13, released by Ministry of Health, Labour and Welfare

The ratio of final-year senior high school students with preliminary job offer was 94.1%, increased for the third straight year by 2.0 points from a year earlier.

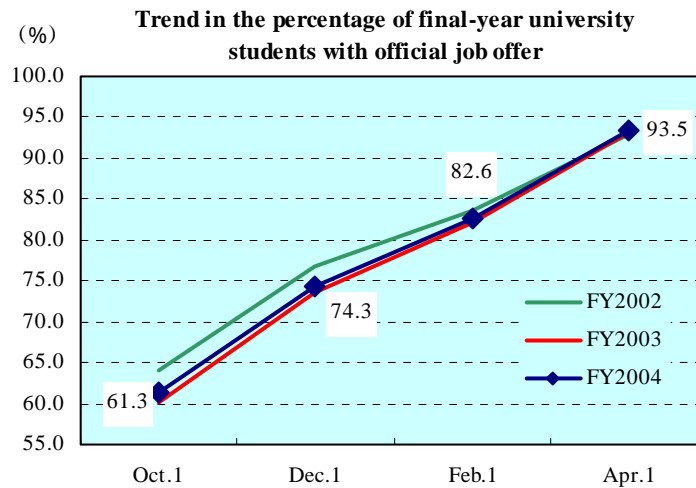


Survey on Situation of Preliminary Job Offer for New Graduate in Mar.2004 (University, etc.) (April 1)

Friday, May 13, released by Ministry of Health, Labour and Welfare,

Ministry of Education, Culture, Sports, Science and Technology

The ratio of final-year university students with preliminary job offer was 93.5%, increased by 0.4 points from a year earlier. The ratio of final-year university students willing to be hired was 66.3%, increased by 2.8 points from a year earlier.

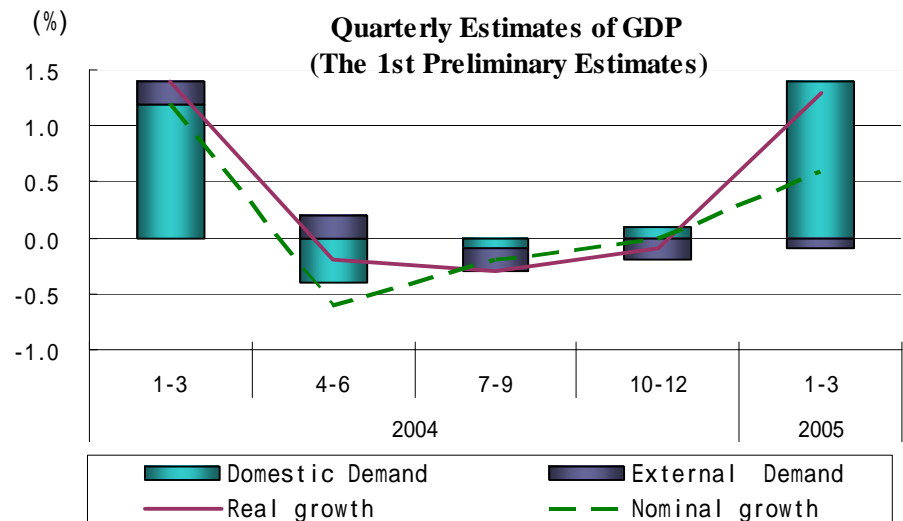


National Accounts (The 1st Preliminary Estimates of Expenditure in Jan.-Mar.)

Tuesday, May 17, released by Cabinet Office

Real GDP (Gross Domestic Product) growth rate (seasonally adjusted) was 1.3% from the previous quarter (5.3% on annual basis).

Of real GDP growth rate, 1.4% was contributed by domestic demand and -0.1% by external demand.



Consultation States of Individual Labor Dispute Resolution System (FY2004)

Monday, May 23, released by Ministry of Health, Labour and Welfare

The total of 160,166 cases of labor consultations regarding civil individual labor disputes were brought to General Labor Consultation Desks in FY2004.

Survey on Industrial Accidents (2004)

Friday, May 27, released by Ministry of Health, Labour and Welfare

The frequency rate of industrial accidents slightly increased, and the intensity rate unchanged from a year earlier.

Consumer Price Index (April)

Friday, May 27, released by Ministry of Public Management,

Home Affairs, Posts and Telecommunications

Consumer price index unchanged from a year earlier, and that for Ku-areas of Tokyo in May decreased by 0.2%.

Indices of Industrial Production (Preliminary Report in April)

Monday, May 30 released by Ministry of Economy, Trade and Industry

Industrial production index (seasonally adjusted) increased first in 3 months by 2.2% from the previous month. The index is expected to increase in May and decrease in June.

Family Income and Expenditure Survey (April)

**Tuesday, May 31, released by Ministry of Public Management, Home Affairs,
Posts and Telecommunications**

Monthly living expenditure per workers' household decreased by 3.1% in real terms compared with a year earlier.

Labor Force Survey (April)

**Tuesday, May 31, released by Ministry of Public Management, Home Affairs,
Posts and Telecommunications**

Report on Employment Service (April)

Tuesday, May 31, released by Ministry of Health, Labour and Welfare

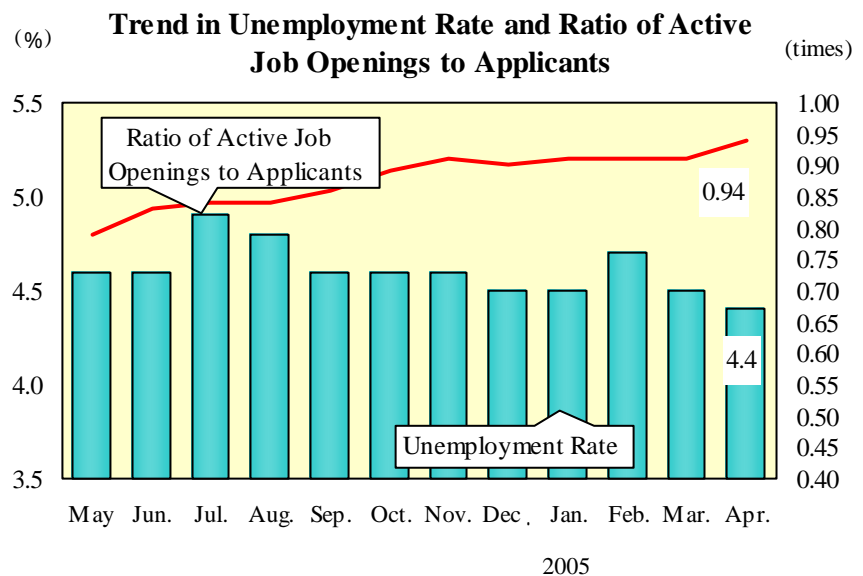
Unemployment rate (seasonally adjusted) was 4.4%, decreased by 0.1 point from the previous month.

That for men decreased by 0.2point to 4.5%, while that for women increased by 0.1 point to 4.3%.

The ratio of active job openings to applicants (seasonally adjusted) was 0.94, increased by 0.03 point from the previous month.

The number of employees (seasonally adjusted) increased by 440,000 from the previous month, marking the second straight rise.

The number of unemployed persons was 3.1million, decreased for the 23rd straight month.



Labor Force Survey : Detailed Analysis (Provisional Report Jan.-Mar.)

**Tuesday, May 31, released by Ministry of Public Management, Home Affairs,
Posts and Telecommunications**

The ratio of non-regular employees to employees except the board members was 32.3%, increased by 0.8 point from a year earlier.

By duration of unemployed period, 1.09 million remained out of work for less than 3 months, followed by 1.01 million of the unemployed people remained out of work for more than a year.

Monthly Labor Survey (Preliminary Report in April)

Wednesday, June 1, released by Ministry of Health, Labour and Welfare

Total cash earnings (for establishments with 5 or more employees) increased by 0.6% from a year earlier, and contractual cash earnings increased by 0.4%.

Non-scheduled hours worked in manufacturing (for establishments with 5 or more employees, seasonally adjusted) increased by 0.4% from the previous month.

Regular workers (for establishments with 5 or more employees) increased by 0.5% from a year earlier.

Annual Counts on Monthly Report of Vital Statistics of Population (Round Figures, 2004)

Wednesday, June 1, released by Ministry of Health, Labour and Welfare

Total fertility rate was 1.29.

Other Reports

Monthly Economic Report (May)

Thursday, May 19, released by Cabinet Office

The economy continues recovering slowly, though partially faint recovery movement goes on.

- * Corporate profits are improving and business investment is increasing moderately.
- * Private consumption is showing movements of a picking up.
- * The employment situation is improving, though some severe aspects remain.
- * Both exports and industrial production remain stable.

Monthly Labor Economy Report (May)

Thursday, May 19, released by Ministry of Health, Labour and Welfare

The employment situation is improving though some severe aspects remain

We have also compiled the "**Main Labor Economics Indicators**", which summarizes indexes Related to the labor economy. Please go to "<https://www.jil.go.jp/english/estatis/eindex.html>"

EDITED BY Statistical Information and Analysis Department, The Japan Institute for Labour Policy and Training