



Recent Statistical Survey Reports

March 2005

[Wednesday, March 9 – Friday, April 1]

Statistical Survey Reports

The Result of Year-end Bonus negotiations among Major Private Enterprises (2004)

Thursday, March 10, released by Ministry of Health, Labour and Welfare

The amount of agreed year-end bonus was 811,082 yen, increased for the 2nd consecutive month by 3.87% from the previous year.

Survey on Situation of Preliminary Job Offer for New Graduate in Mar.2005 (Senior and Junior High School) (End of January)

Thursday, March 10, released by Ministry of Health, Labour and Welfare

The ratio of active job openings to applicants for final-year senior high school students was 1.30, increased by 0.20 points from a year earlier. The number of final-year senior high school students with official job offer was 154 thousand, increased by 6.1% from a year earlier. The ratio of applicants who got job offer was 81.6%, increased by 4.9 points.

Survey on Situation of Preliminary Job Offer for New Graduate in Mar.2005 (University, etc.) (February 1)

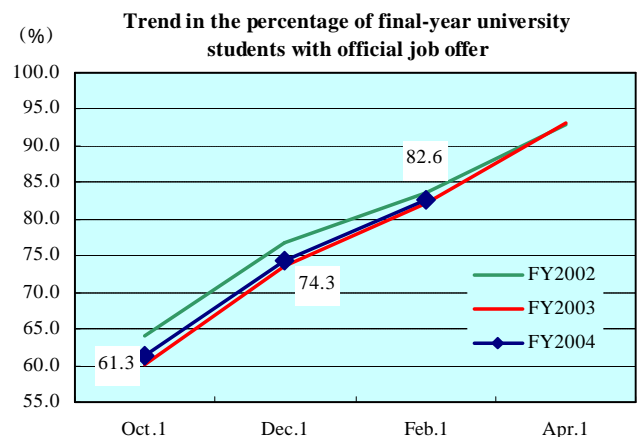
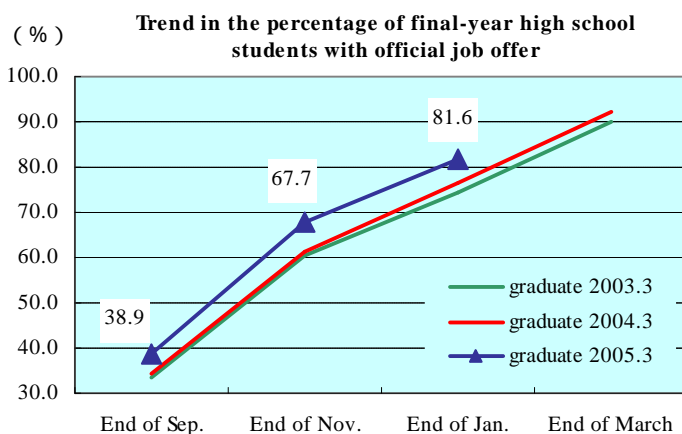
Thursday, March 10, released by Ministry of Health, Labour and Welfare, Ministry of Education, Culture, Sports, Science and Technology

The ratio of final-year university students with preliminary job offer was 82.6%, increased by 0.5 points from a year earlier.

That of final-year junior college students (female only) was 66.0%, decreased by 2.5 points from a year earlier.

That of final-year technology college students (male only) was 98.5%, increased by 0.2 points from a year earlier.

That of final-year higher vocational school students was 75.3%, increased by 5.5 points from a year earlier.



2nd round of 21st Century Follow-up Survey on Adult (Continuous Survey on life of the people)

Friday, March 11, released by Ministry of Health, Labour and Welfare

62.1% of mothers who had jobs a year ago and gave birth within 1 year continued to work at the same job.

65.5% of women who intended a year ago to continue work after marriage actually continued work. 8.2% of women changed their work.

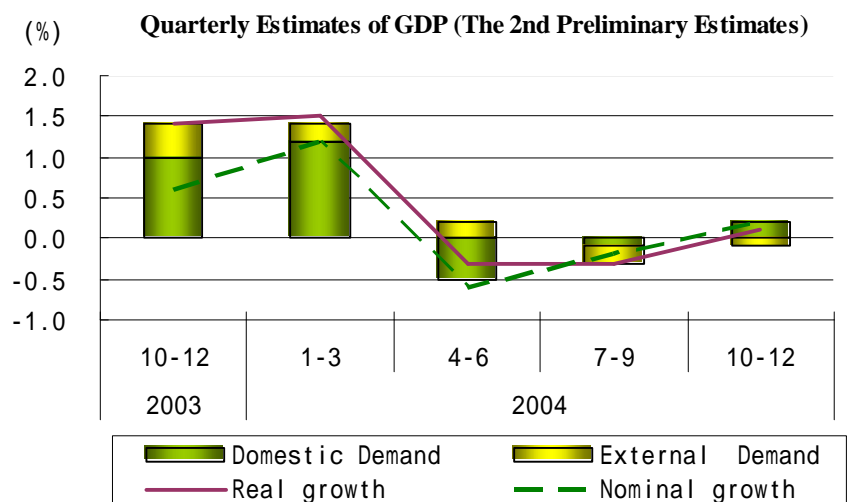
19.8% of housewives who wanted to work a year ago actually got employed.

National Accounts (The 2nd Preliminary Estimates of Expenditure in Oct.-Dec.)

Monday, March 14, released by Cabinet Office

Real GDP (Gross Domestic Product) growth rate (Seasonally Adjusted) increased for the first time in 3 quarters by 0.1% (0.5% on annual basis).

Of real GDP growth rate, 0.2% was contributed by domestic demand and -0.1% by external demand.



Basic Survey on Wage Structure (2004)

Monday, March 14, released by Ministry of Health, Labour and Welfare

The average scheduled cash earnings for general employees was 301,600 yen, decreased for the 3rd consecutive year by 0.2% from the previous year. That for men was 333,900 yen (decreased by 0.5% from the previous year), and that for women was 225,600 yen (increased by 0.6%).

Hourly wages of part-time employee for men was 1,012 yen (increased by 0.9% from the previous year), that for women was 904 yen (increased by 1.2%).

Consumer Price Index (February, Ku-areas in Tokyo in March and 2003)

Friday, March 25, released by Public Management, Home Affairs,

Posts and Telecommunications

Consumer price index decreased from a year earlier by 0.3%, and that of Ku-areas in Tokyo in March also decreased by 0.3%.

Consumer price index of Ku-areas in Tokyo in 2004 decreased for the 6th consecutive year by 0.1% from a year earlier.

Family Income and Expenditure Survey (February)

Tuesday, March 29, released by Ministry of Public Management, Home Affairs,

Posts and Telecommunications

Monthly living expenditure per workers' household dropped for the first time in 2 months by 3.8% in real value from a year earlier.

Labour Force Survey (February)

Tuesday, March 29, released by Ministry of Public Management, Home Affairs,

Posts and Telecommunications

Report on Employment Service (February)

Tuesday, March 29, released by Ministry of Health, Labour and Welfare

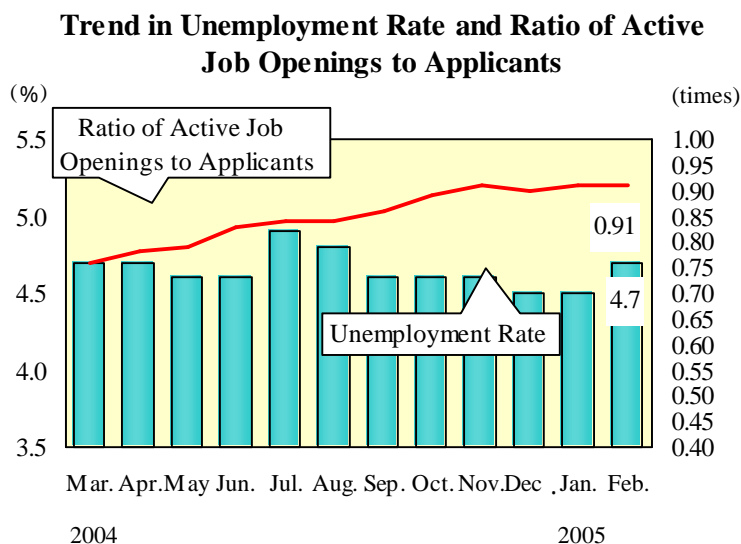
Unemployment rate (seasonally adjusted) was 4.7%, increased for the first time in 7 months from the previous month by 0.2 points.

That for men increased by 0.2 points to 5.0%, while that for women increased by 0.1 point to 4.2%.

The number of unemployed persons decreased for the 21th consecutive month from a year earlier to 3.08 million.

The number of employees (seasonally adjusted) unchanged from the previous month.

The ratio of active job openings to applicants (seasonally adjusted) was 0.91, unchanged from the previous month.



Indices of Industrial Production (Preliminary Report for February)

Wednesday, March 30, released by Ministry of Economy, Trade and Industry

The index of industrial production (seasonally adjusted) dropped for the first time in 2 months by 2.1% from the previous month. The index was expected to increase in March and April.

Basic Survey on Business Structure and Activities (2004)

Wednesday, March 30, released by Ministry of Economy, Trade and Industry

The number of full-time employees per one company in FY 2003 decreased by 0.2% from the previous fiscal year, while that of part-time employees increased by 0.7%. That of dispatched workers swelled by 23.3%.

Monthly Labor Survey (Preliminary Report in February / Year-end Bonus)

Wednesday, March 30, released by Ministry of Health, Labour and Welfare

Total cash earnings (for establishments with 5 or more employees) increased by 0.1% from a year earlier, and contractual cash earnings decreased by 0.1%.

Non-scheduled hours worked in manufacturing (for establishments with 5 or more employees, seasonally adjusted) decreased by 1.2% from the previous month, marking the first decrease in 2 months.

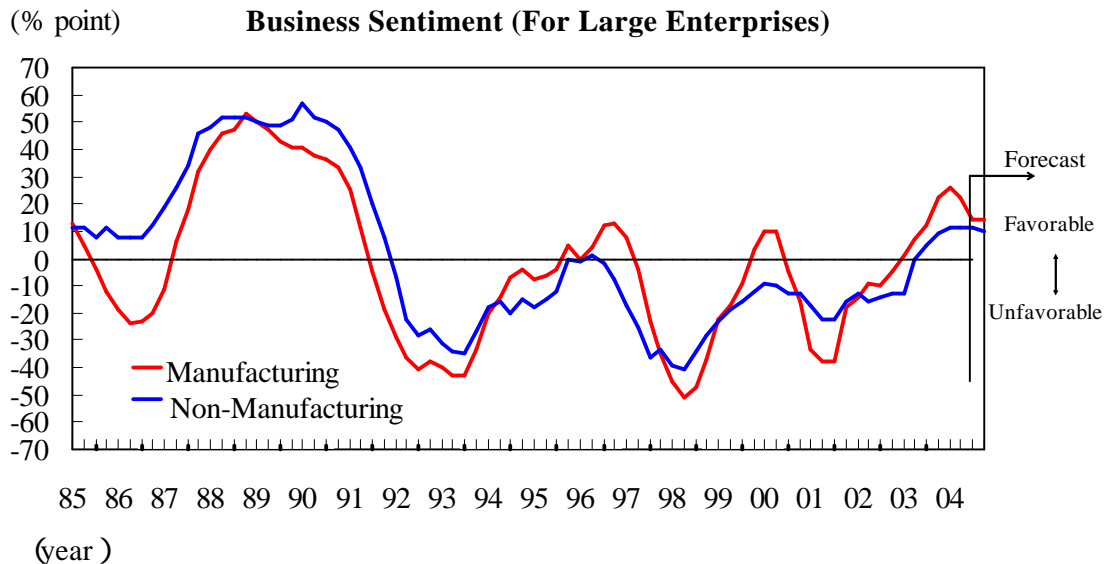
The amount of year-end bonus was 430,278 yen, increased for the first time in 8 years by 2.7% from the previous year.

TANKAN (Short-Term Economic Survey of Enterprises) (March)

Friday, April 1, released by Bank of Japan

The Diffusion Index (DI) ("Favorable"- "Unfavorable") for business sentiment in large enterprises was 14 (22 in the previous quarter and forecast 14 in the coming quarter). For non-manufacturing DI was 11 (11 in the previous quarter and forecast 10 in the coming quarter).

The Diffusion Index (DI) ("Excessive"- "Insufficient") for employment sentiment in large enterprises of all industry was 1(3 in the previous quarter and forecast 0 in the coming quarter).



Other Reports

Monthly Economic Report (March)

Wednesday, March 16, released by Cabinet Office

The economy is recovering at a moderate pace, while some weak movements continue to be seen.

- * Corporate profits are improving and business investment is increasing moderately.
- * Private consumption is almost flat.
- * The employment situation is improving, though some severe aspects remain.
- * Exports are weakening and industrial production is leveling off.

As for short-term prospects, the economic recovery is expected to remain solid with steady recovery in the world economy, as the corporate sector continues to be resilient. On the other hand, attention should be given to the inventory adjustment in the IT related area and to the developments of crude oil prices and other factors.

Monthly Labor Economy Report (March)

Thursday, March 17, released by Ministry of Health, Labour and Welfare

The employment situation is improving, though some severe aspects remain.

Actual Situation of Working Women (2004)

Friday, March 25, released by Ministry of Health, Labour and Welfare

We have also compiled the "**Main Labor Economics Indicators**", which summarizes indexes
Related to the labor economy. Please go to "<https://www.jil.go.jp/english/estatis/eindex.html>"

EDITED BY Statistical Information and Analysis Department, The Japan Institute for Labour Policy and Training